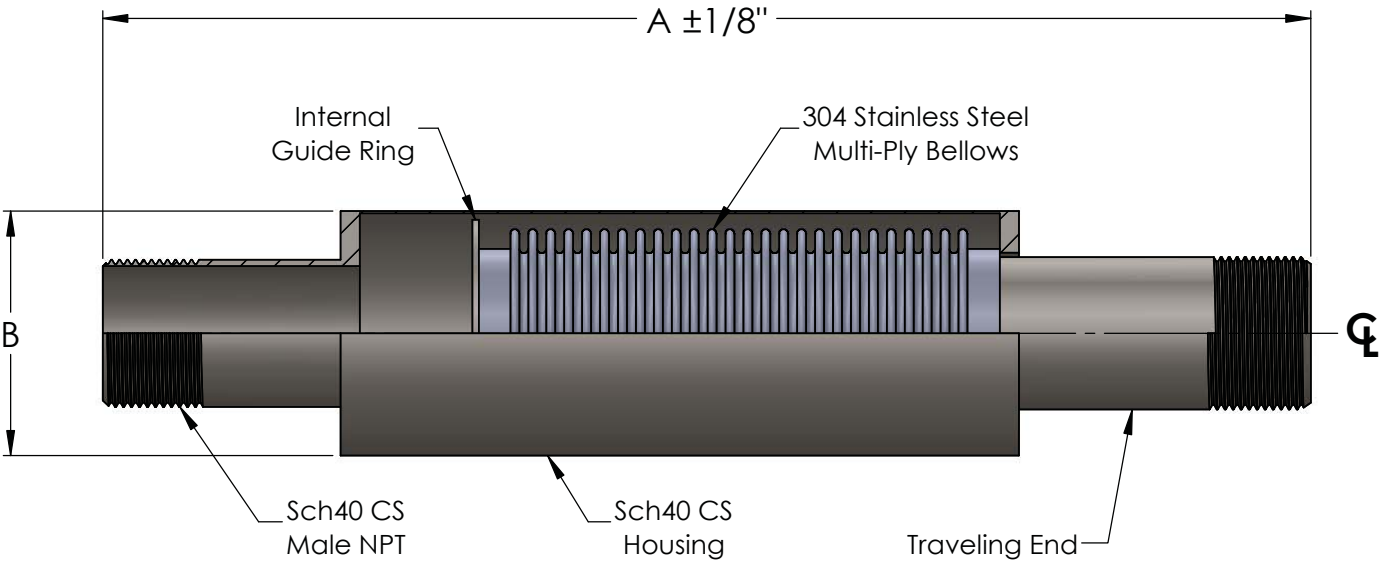
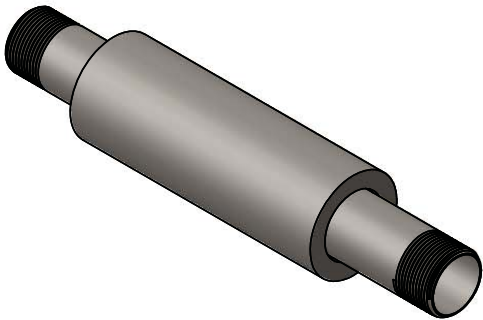


Triad Bellows NPT Expansion Compensator  
Rated 2" Compression 1/2" Extension



QTY.	PART NUMBER	SIZE		A (IN)	B (IN)	EFFECTIVE AREA (IN <sup>2</sup> )	SPRING RATE (lbs/in)	WEIGHT	NOTES
		(IN)	(MM)						
	120-075-1	3/4"	20	12-3/4	3	1.5	81	3	
	120-10-1	1"	25	13-1/4	3	2.1	88	4	
	120-12-1	1-1/4"	32	13-1/4	3	3.3	75	5	
	120-15-1	1-1/2"	38	14-5/8	3-1/2	4.3	121	7	
	120-20-1	2"	50	14-5/8	4	6.3	143	10	
	120-25-1	2-1/2"	65	16	5	8.8	187	14	
	120-30-1	3"	80	16	5-1/2	13.1	230	18	
	120-40-1	4"	100	16-3/8	6-5/8	20.8	484	25	

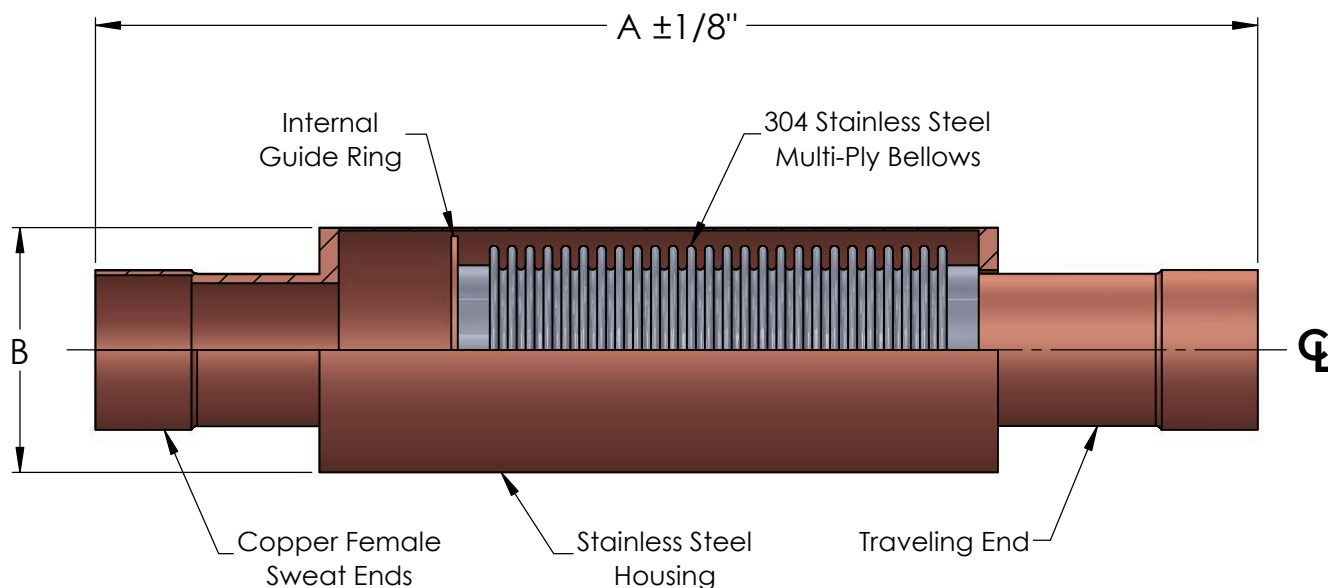
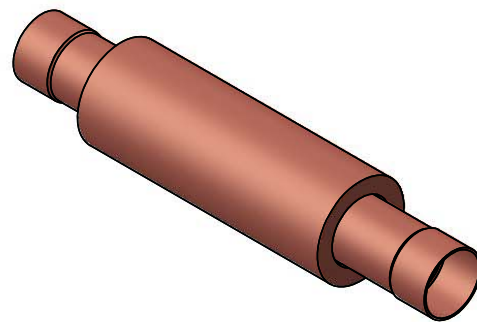
THIS EXPANSION JOINT IS DESIGNED FOR AXIAL MOVEMENT ONLY. PIPES MUST BE PROPERLY GUIDED AND ANCHORED PER THE RECOMMENDATIONS OF THE EXPANSION JOINT MANUFACTURERS ASSOCIATION.

Temperature	750°F (399°C)
Pressure	175 PSI (1206 kPa)
Test Pressure	250 PSI (1809 kPa)
Axial Compression	2" (50mm)
Axial Extension	1/2" (13mm)

NOTES:  
NSF 372 - LEAD FREE: The wetted surface of this product contacted by water contains less than one quarter of one percent (0.25%) of lead by weight. Material complies with state codes and standards where applicable, requiring reduced lead content.

REV.	
Customer:	
Project:	
Style:	
SCALE: NONE	DRAWING NUMBER:

# Copper Sweat Expansion Compensator Rated 2" Compression 1/2" Extension



QTY.	PART NUMBER	SIZE		A (IN)	B (IN)	EFFECTIVE AREA (IN <sup>2</sup> )	SPRING RATE (lbs/in)	WEIGHT	NOTES
		(IN)	(MM)						
	120-075-2	3/4"	20	11	1-5/8	1.1	82	3/4	
	120-10-2	1"	25	11-1/4	2	1.7	89	1	
	120-12-2	1-1/4"	32	12-1/2	2-1/4	2.4	75	1-1/2	
	120-15-2	1-1/2"	38	12-7/8	2-1/2	3.2	74	2	
	120-20-2	2"	50	13	3	5.1	168	3	
	120-25-2	2-1/2"	65	13-1/4	4	7.6	188	4	
	120-30-2	3"	80	14	4-1/2	10.6	251	4-1/2	
	120-35-2	4"	100	15-1/16	5-7/8	17.9	341	9	

**THE EXPANSION JOINT IS DESIGNED FOR AXIAL MOVEMENT ONLY. PIPE MUST BE PROPERLY GUIDED AND ANCHORED PER THE RECOMMENDATIONS OF THE EXPANSION JOINT MANUFACTURERS ASSOCIATION.**

## NOTES:

**NSF 372 - LEAD FREE:** The wetted surface of this product contacted by water contains less than one quarter of one percent (0.25%) of lead by weight. Material complies with state codes and standards where applicable, requiring reduced lead content.

Temperature	400°F (204°C)
Pressure	150 PSI (1034 kPa)
Test Pressure	225 PSI (1551 kPa)
Axial Compression	2" (50mm)
Axial Extension	1/2" (13mm)

REV.



Customer:

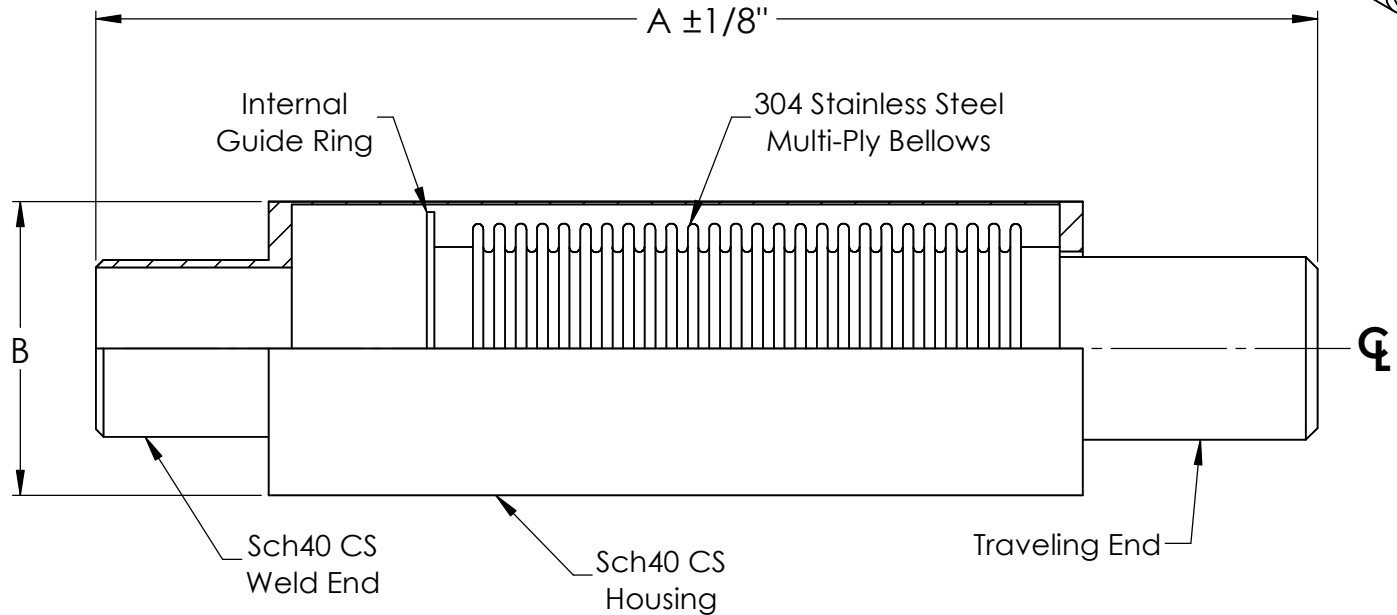
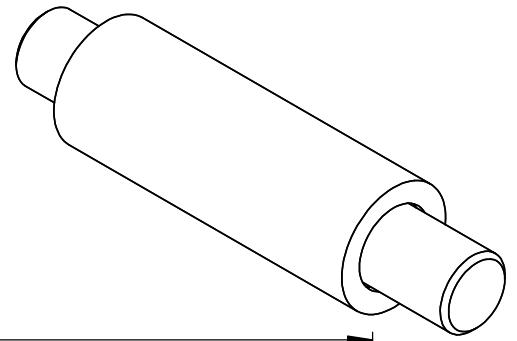
Project:

Style:

SCALE:  
NONE

DRAWING NUMBER:

# Weld End Expansion Compensator Rated 2" Compression 1/2" Extension



QTY.	PART NUMBER	SIZE		A (IN)	B (IN)	EFFECTIVE AREA (IN <sup>2</sup> )	SPRING RATE (lbs/in)	WEIGHT	NOTES
		(IN)	(MM)						
	120-075-3	3/4"	20	12-3/4	3	1.5	81	3	
	120-10-3	1"	25	13-1/4	3	2.1	88	4	
	120-12-3	1-1/4"	32	13-1/4	3	3.3	75	5	
	120-15-3	1-1/2"	38	14-5/8	3-1/2	4.3	121	7	
	120-20-3	2"	50	14-5/8	4	6.3	143	10	
	120-25-3	2-1/2"	65	16	5	8.8	187	14	
	120-30-3	3"	80	16	5-1/2	13.1	230	18	
	120-40-3	4"	100	16-3/8	6-5/8	20.8	484	25	

**THIS EXPANSION JOINT IS DESIGNED FOR AXIAL MOVEMENT ONLY. PIPING MUST BE PROPERLY GUIDED AND ANCHORED PER THE RECOMMENDATIONS OF THE EXPANSION JOINT MANUFACTURERS ASSOCIATION.**

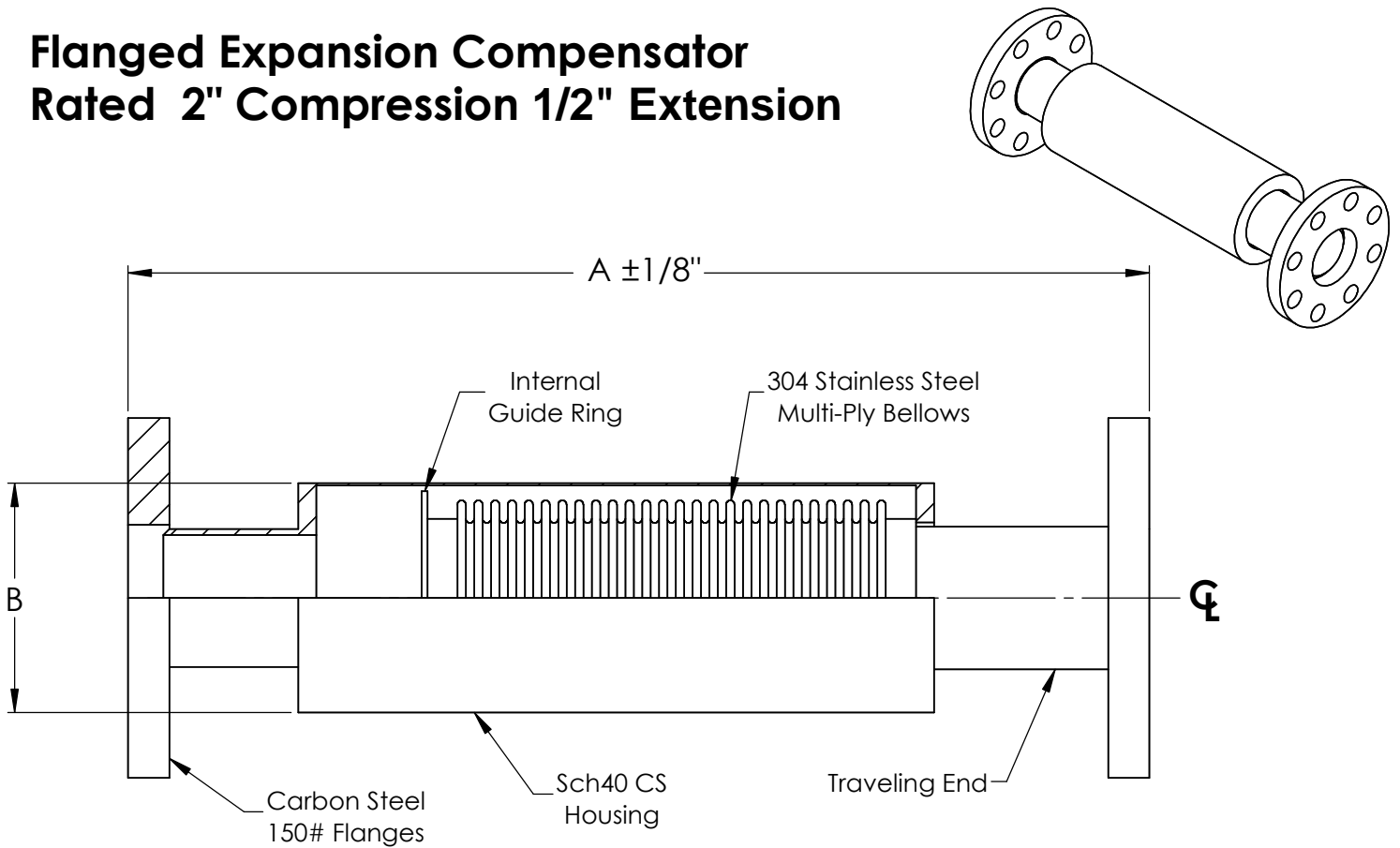
## NOTES:

**NSF 372 - LEAD FREE:** The wetted surface of this product contacted by water contains less than one quarter of one percent (0.25%) of lead by weight. Material complies with state codes and standards where applicable, requiring reduced lead content.

Temperature	750°F (399°C)
Pressure	175 PSI (1206 kPa)
Test Pressure	250 PSI (1809 kPa)
Axial Compression	2" (50mm)
Axial Extension	1/2" (13mm)

REV.	DRAWN BY:	Date: 7/31/2020
Customer:		
Project:		
Style: HHWE Series - Weld End Compensator		
SCALE: NONE	DRAWING NUMBER:	

# Flanged Expansion Compensator Rated 2" Compression 1/2" Extension



QTY.	PART NUMBER	SIZE		A (IN)	B (IN)	EFFECTIVE AREA (IN <sup>2</sup> )	SPRING RATE (lbs/in)	WEIGHT	NOTES
		(IN)	(MM)						
	120-075-4	3/4"	20	13-3/8	3	1.5	81	8	
	120-10-4	1"	25	13-3/8	3	2.1	88	9	
	120-12-4	1-1/4"	32	13-7/8	3	3.3	75	12	
	120-15-4	1-1/2"	38	15-1/4	3-1/2	4.3	121	14	
	120-20-4	2"	50	15-1/4	4	6.3	143	18	
	120-25-4	2-1/2"	65	16-5/8	5	8.8	187	29	
	120-30-4	3"	80	16-5/8	5-1/2	13.1	230	34	
	120-40-4	4"	100	17	6-5/8	20.8	484	47	

**THIS EXPANSION JOINT IS DESIGNED FOR AXIAL MOVEMENT ONLY. PIPES MUST BE PROPERLY GUIDED AND ANCHORED PER THE RECOMMENDATIONS OF THE EXPANSION JOINT MANUFACTURERS ASSOCIATION.**

## NOTES:

**NSF 372 - LEAD FREE:** The wetted surface of this product contacted by water contains less than one quarter of one percent (0.25%) of lead by weight. Material complies with state codes and standards where applicable, requiring reduced lead content.

Temperature	750°F (399°C)
Pressure	175 PSI (1206 kPa)
Test Pressure	250 PSI (1809 kPa)
Axial Compression	2" (50mm)
Axial Extension	1/2" (13mm)

REV.	DRAWN BY:	Date: 7/31/2020
		
Customer:		
Project:		
Style: HFLG Series - Flanged Compensator		
SCALE: NONE	DRAWING NUMBER:	